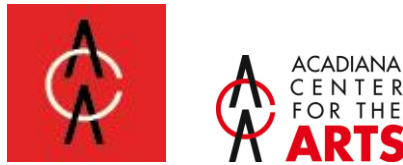


## Performance Information:

- ❖ **FREE!** No registration required but space is limited! Please come early. Adult must accompany children younger than 12.
- ❖ Feel free to attend programs at any or all of the library locations. All locations are handicap accessible. Grant sponsored performers will perform at all six locations.
- ❖ Ask for a calendar of performances at the library. We have a great lineup this summer!



These performances were supported by a grant from the Louisiana Division of the Arts, Office of Cultural Development, Department of Culture, Recreation and Tourism in cooperation with the Louisiana State Arts Council as administered by the Acadiana Center For The Arts. Additional funding for reading prizes and supplies was provided by the Friends of the Library, Basile State Bank, Cabot Corporation, Pine Prairie Energy. Thank YOU!



## SUMMER READING PROGRAMS 2016

### EVANGELINE PARISH LIBRARY

Ages 0 – 11 **ON YOUR MARK, GET SET... READ!**

Ages 12 – 17 **GET IN THE GAME READ**

Ages 18 + **EXERCISE your mind. READ!**

**ALL EVENTS AND ACTIVITIES ARE COMPLETELY FREE!**

Early registration begins at your local branch on May 31, 2016. *No prizes will be given out before June.*

The library has set up the **SAME READING GOALS** for ALL age groups: 10 books per log sheet.

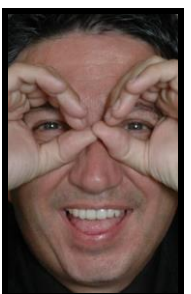
All Evangeline Parish Public Library books, whether checked out or read in the library, count for this Summer Reading Program.

Participants should register at **ONE** location and submit **ALL** book logs and receive all prizes at that location. They can attend programs throughout the parish.

Magician  
Mitch Richard



Troupe d'Evangeline



Storyteller  
Nathan Roberts

## How Our Reading Program Works:

☀ Register at your local branch only. Children twelve and up can register themselves. Participants will need access to a valid Evangeline Parish Library card in order to take books out of the library. [Note to cardholders: please insist that books checked out on your card **stay at your residence**. This is for your own protection, since you are **financially responsible for all materials checked out on your card**. Books can also be read inside the library without checking them out.\*

☀ Complete a ten-book reading log (print books ebooks & audio books) and turn it in: get a treasure chest prize\*\* and a new log, plus your completed log back as a keepsake. You will also get a special certificate when you turn in your first log.

☀ You can read to a younger child and both receive credit, so if you are babysitting this summer this is a great program for you.

☀ Parents, please encourage children to read on their reading level, unless they are reading aloud to younger children.\*\*\*

☀ Although you can turn in more than 12 completed reading logs, there is a maximum of 12 treasure chest prizes per reader per summer. Also, we can accept no more than 2 logs per week for treasure chest drawings.

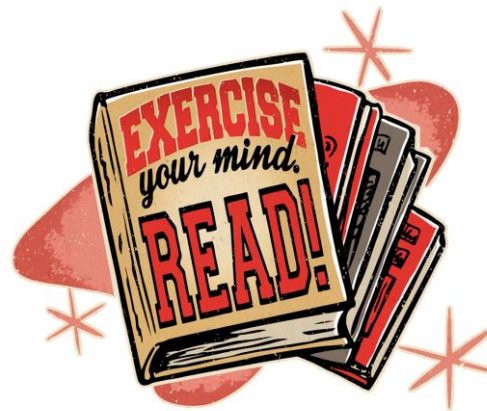
☀ Last day for logs and treasure chest prizes is Friday, JULY 29th at all branches EXCEPT Turkey Creek which will be Thursday, JULY 28, 2016.

### Reading Program Notes:

- \* For information about how to get a library card, please contact your local library branch. See phone numbers in this brochure. Adult card is required for age 18 and up program.

- \*\* Get prizes ONLY at the ONE branch where you are registered. Parents or guardians are responsible for monitoring young children's prize drawings. Please ensure your child selects an age and developmentally appropriate prize. **Special coloring sheets are available as alternative prizes for very young children.** Sorry, Library is not responsible for lost, stolen, or broken prizes, and cannot replace them..
- \*\*\* Library staff will not monitor or limit children's reading choices.

## Ages 18 - ADULT:



Evangeline Parish library card required to participate. Use your adult library card. Checkout at least two (2) adult books each visit. Drop your receipt in the drawing jar. Drawings will be held in **June, July and August**. You do not have to be present to win.

## Library Contact Information for all Library Branches:

**VILLE PLATTE MAIN LIBRARY**  
916 West Main St, Ville Platte, LA  
70586  
337-363-1369

**BASILE BRANCH LIBRARY**  
3036 Stagg Ave, Basile, LA 70515  
Manager: Sherry Bergeron  
(337) 432-6794

**CHATAIGNIER BRANCH  
LIBRARY**  
6215 Charles Armand St., Chat., LA  
70524  
Manager: Patrola Savoy  
(337) 885-2028

**MAMOU BRANCH LIBRARY**  
317 2<sup>nd</sup> St., Mamou, LA 70554  
Manager: Angela Henry  
(337) 468-5750

**PINE PRAIRIE BRANCH LIBRARY**  
111 Walnut Street, Pine Prairie, LA  
70576  
Manager: Pam Guillory  
(337) 599-3179

**TURKEY CREEK BRANCH  
LIBRARY**  
13951 Veterans Memorial Hwy,  
LA 70585  
Manager: Tina King  
(337) 461-2304

**For more information call:**

**(337) 363-1369**

**[www.evangelinelibrary.org](http://www.evangelinelibrary.org)**